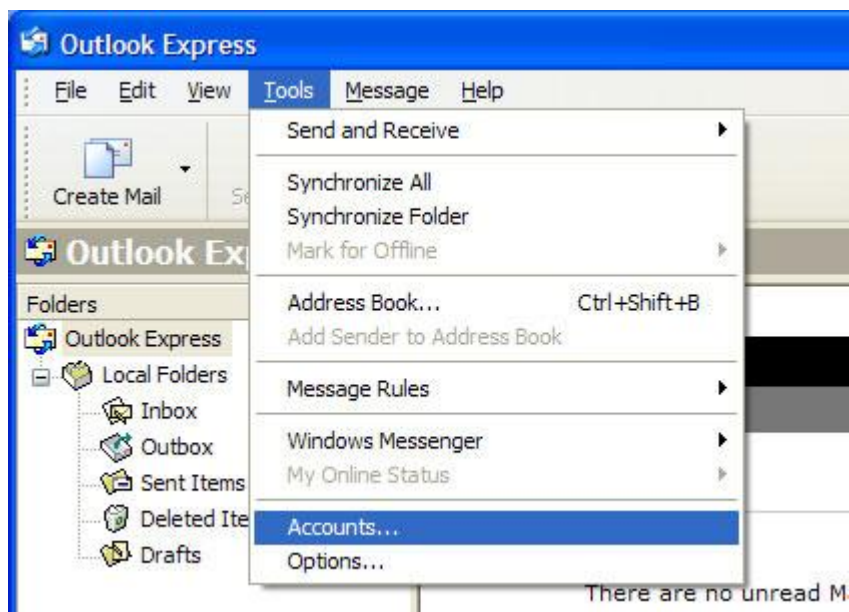


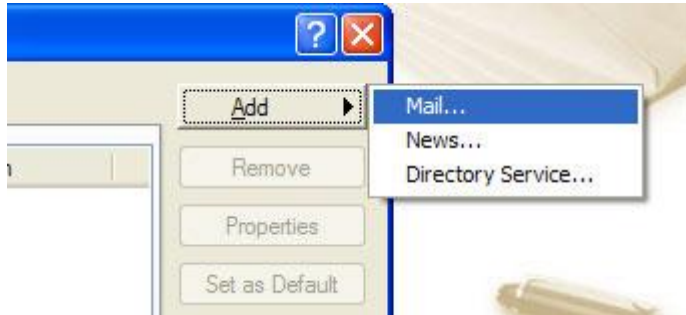


Configuring Outlook Express 6.0

- Step 1.** Open Outlook Express 6.0
In the menu bar, go to the **Tools** drop down menu and select **Accounts**.



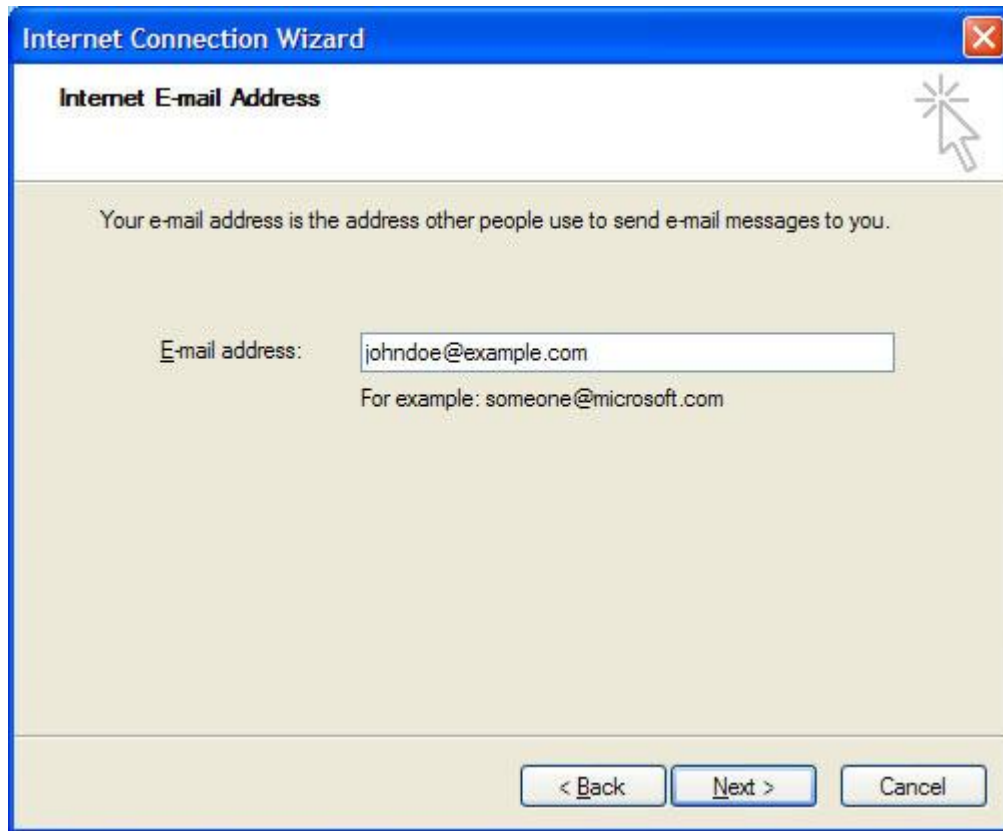
Step 2. Select Add → Mail...



- Step 3.** Using the Internet Connection Wizard, enter your name.
Click on **Next**.

A screenshot of the "Internet Connection Wizard" window. The title bar is blue and contains the text "Internet Connection Wizard" and a close button. The main area has a white header with the text "Your Name" and a help icon. Below this, there is a light beige background with the following text: "When you send e-mail, your name will appear in the From field of the outgoing message. Type your name as you would like it to appear." Below this text is a label "Display name:" followed by a text input field containing "John Doe". Underneath the input field is the text "For example: John Smith". At the bottom of the window, there are three buttons: "< Back", "Next >" (which is highlighted with a blue border), and "Cancel".

- Step 4.** Enter your email address.
Click on **Next**.

A screenshot of the "Internet Connection Wizard" dialog box, specifically the "Internet E-mail Address" step. The window has a blue title bar with the text "Internet Connection Wizard" and a close button. The main area is light beige and contains the following text: "Internet E-mail Address" at the top right, followed by "Your e-mail address is the address other people use to send e-mail messages to you." Below this is a text input field labeled "E-mail address:" containing the text "johndoe@example.com". Underneath the input field is the text "For example: someone@microsoft.com". At the bottom of the dialog are three buttons: "< Back", "Next >", and "Cancel".

Internet Connection Wizard

Internet E-mail Address

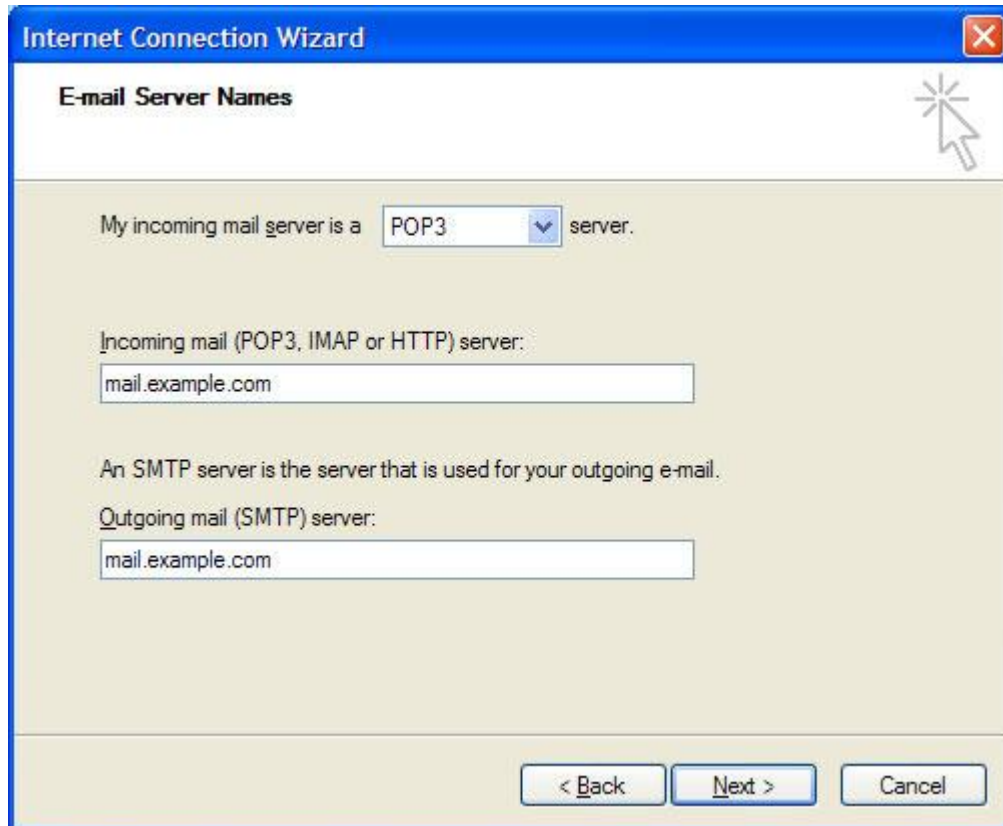
Your e-mail address is the address other people use to send e-mail messages to you.

E-mail address: johndoe@example.com

For example: someone@microsoft.com

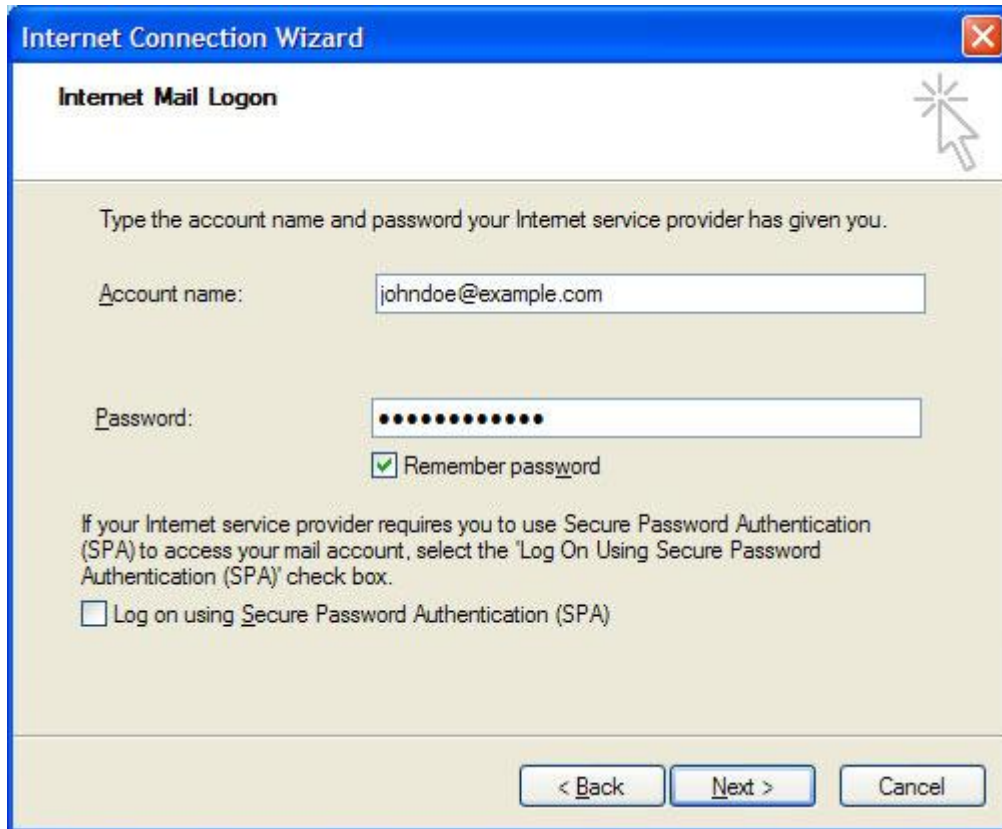
< Back Next > Cancel

- Step 5.** In the drop down box, select **POP3**.
Enter your Incoming mail server and Outgoing mail server (mail.YOURDOMAIN.com)
Click on **Next**.

A screenshot of the "Internet Connection Wizard" dialog box, specifically the "E-mail Server Names" step. The window has a blue title bar with the text "Internet Connection Wizard" and a close button (X) in the top right corner. The main content area is light beige and contains the following text and controls:

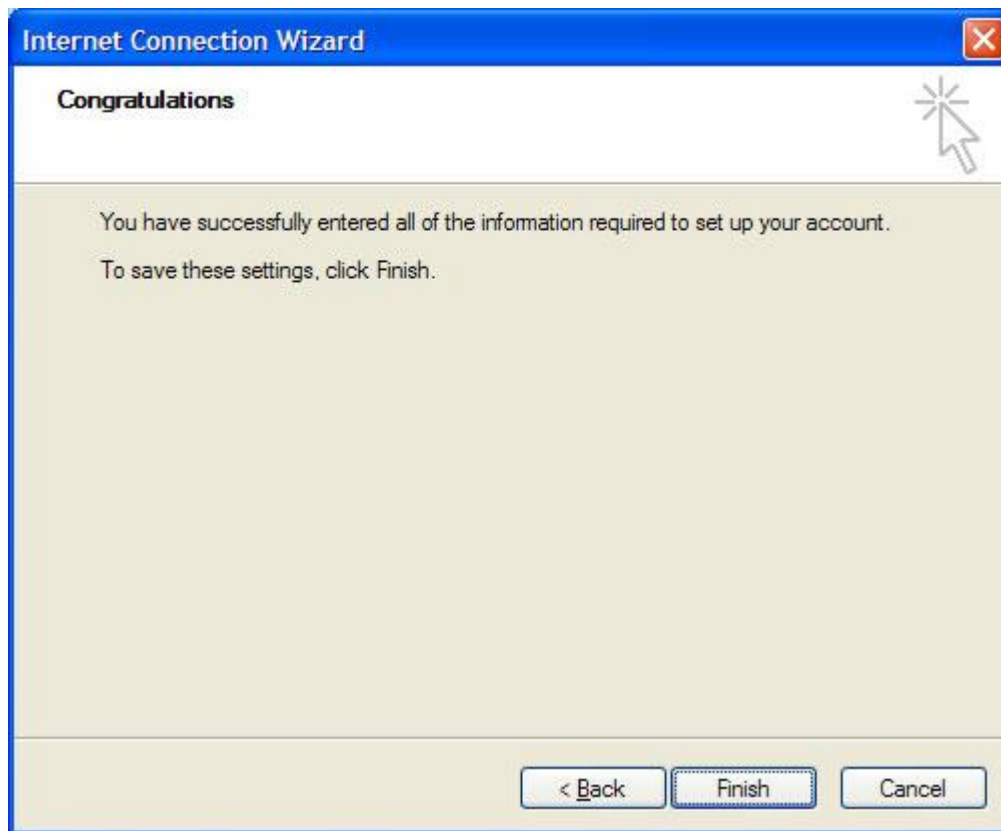
- The title "E-mail Server Names" is at the top left.
- A label "My incoming mail server is a" is followed by a dropdown menu showing "POP3" and a downward arrow, and the word "server.".
- A label "Incoming mail (POP3, IMAP or HTTP) server:" is followed by a text input field containing "mail.example.com".
- A label "An SMTP server is the server that is used for your outgoing e-mail." is followed by a text input field containing "mail.example.com".
- At the bottom, there are three buttons: "< Back", "Next >", and "Cancel".

- Step 6.** Enter your account name. (**NOTE: Your Account Name is your FULL email address).
- Enter your password.
- Check “Remember Password” to avoid entering your password every time you check or send email.
- Click on **Next**.

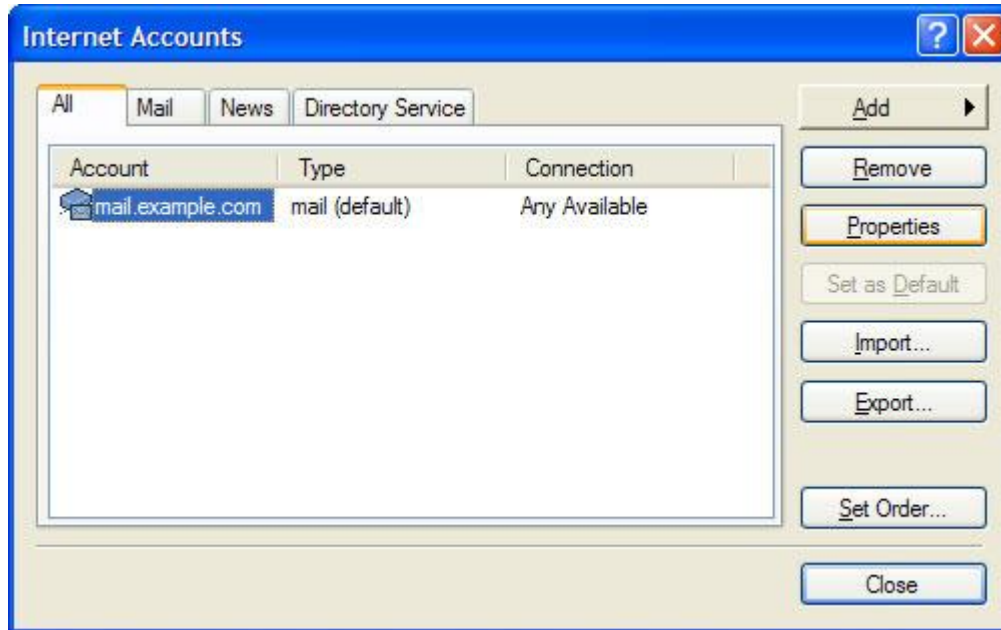


The screenshot shows a Windows dialog box titled "Internet Connection Wizard" with a sub-header "Internet Mail Logon". The main text reads: "Type the account name and password your Internet service provider has given you." Below this, there are two input fields: "Account name:" containing "johndoe@example.com" and "Password:" containing a series of dots. A checked checkbox labeled "Remember password" is located below the password field. At the bottom, there is a paragraph of text: "If your Internet service provider requires you to use Secure Password Authentication (SPA) to access your mail account, select the 'Log On Using Secure Password Authentication (SPA)' check box." Below this text is an unchecked checkbox labeled "Log on using Secure Password Authentication (SPA)". At the bottom right of the dialog box are three buttons: "< Back", "Next >", and "Cancel".

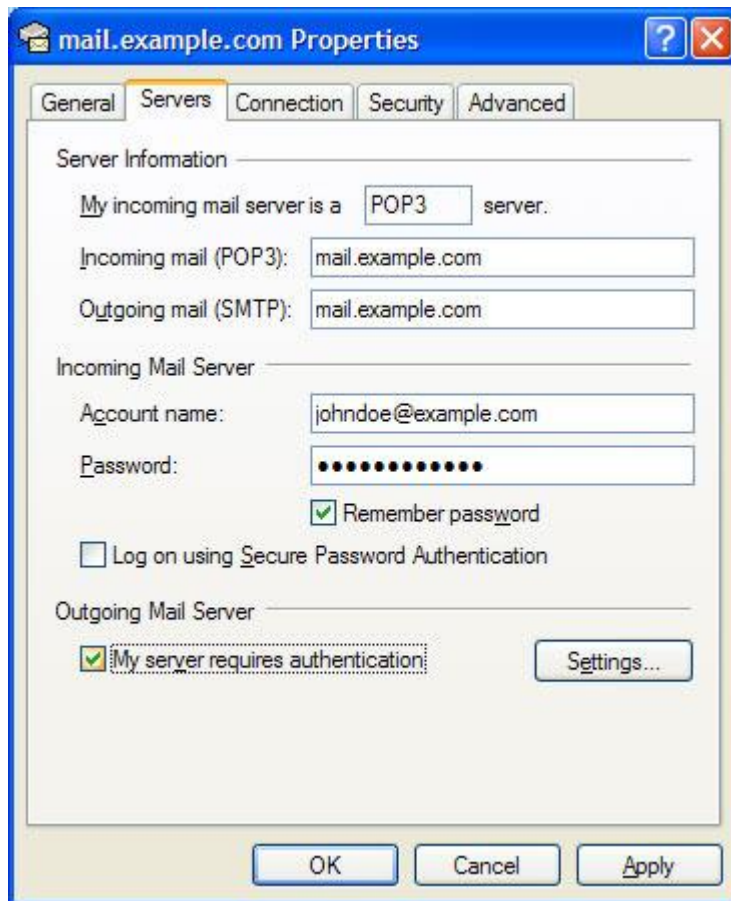
Step 7. Click on **Finish** to save your settings.



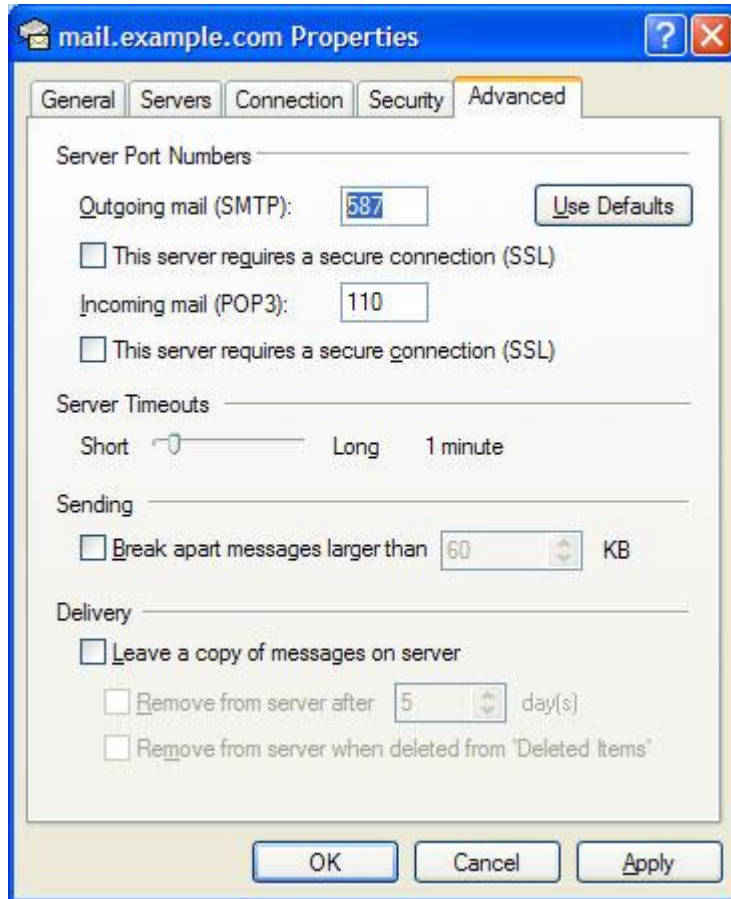
- Step 8.** We're almost done! Go back to the **Tools** drop down menu like we did in Step 1 and select **Accounts**. Highlight the account you just created. Click on **Properties**.



- Step 9.** Click on the **Servers** tab.
Check “My server requires authentication”.



- Step 10.** OPTIONAL: Some ISPs restrict outbound mail on port 25.
Click on the **Advanced** tab.
Change the Outgoing Port from 25 to **587**.
Click **OK**



- Step 11.** You're done! If you have any problems, please double check your settings. If you still have problems connecting, don't hesitate to call us or write to us at:
admin @ springshosting.com

Hint: F9 is a shortcut for Send/Receive Mail